



**water affairs**

Department:  
Water Affairs  
REPUBLIC OF SOUTH AFRICA

**CLASSIFICATION OF WATER RESOURCES AND THE  
DETERMINATION OF THE COMPREHENSIVE RESERVE  
AND RESOURCE QUALITY OBJECTIVES IN THE  
MVOTI TO UMZIMKULU WMA  
PSC MEETING 2**

**Venue: Durban Country Club, Masabalala Yengwe Avenue**

**Date: 26 November 2013**

**Time: 9:00-13:00**

# PRESENTATION CONTENT

- **Purpose of the meeting**
- **Water Resource Protection**
- **Socio-economic and Ecological Water Requirements**
- **Stakeholder Engagement**
- **Next steps**

## **PURPOSE OF THE MEETING**

- **To provide feedback on the progress of classifying water resources, Reserve and Resource Quality Objectives (RQOs) in the Mvoti to Umzimkulu WMA**
- **To provide the necessary information to engage with the stakeholders on the Socio-economic component and Ecological Water Requirements**
- **To provide an overview of way forward in the process**

# The Link of Water Resource Classification, Reserve & RQOs

## ❑ Classification

- Weighs up all the consequences of different scenario of managing a catchment.
- Output is the Management Class (MC)

## ❑ Reserve

- Quantifies the Quantity & Quality of water to achieve certain Ecological state and Basic Human Needs (BHN) requirements

## ❑ Resource Quality Objectives (RQO)

**RQOs** are numerical and/or narrative descriptive statements of conditions which should be met in the receiving water resource.

**RQOs will be developed to describe the set MCs – leading to monitoring**

# THE PURPOSE OF CLASSIFICATION

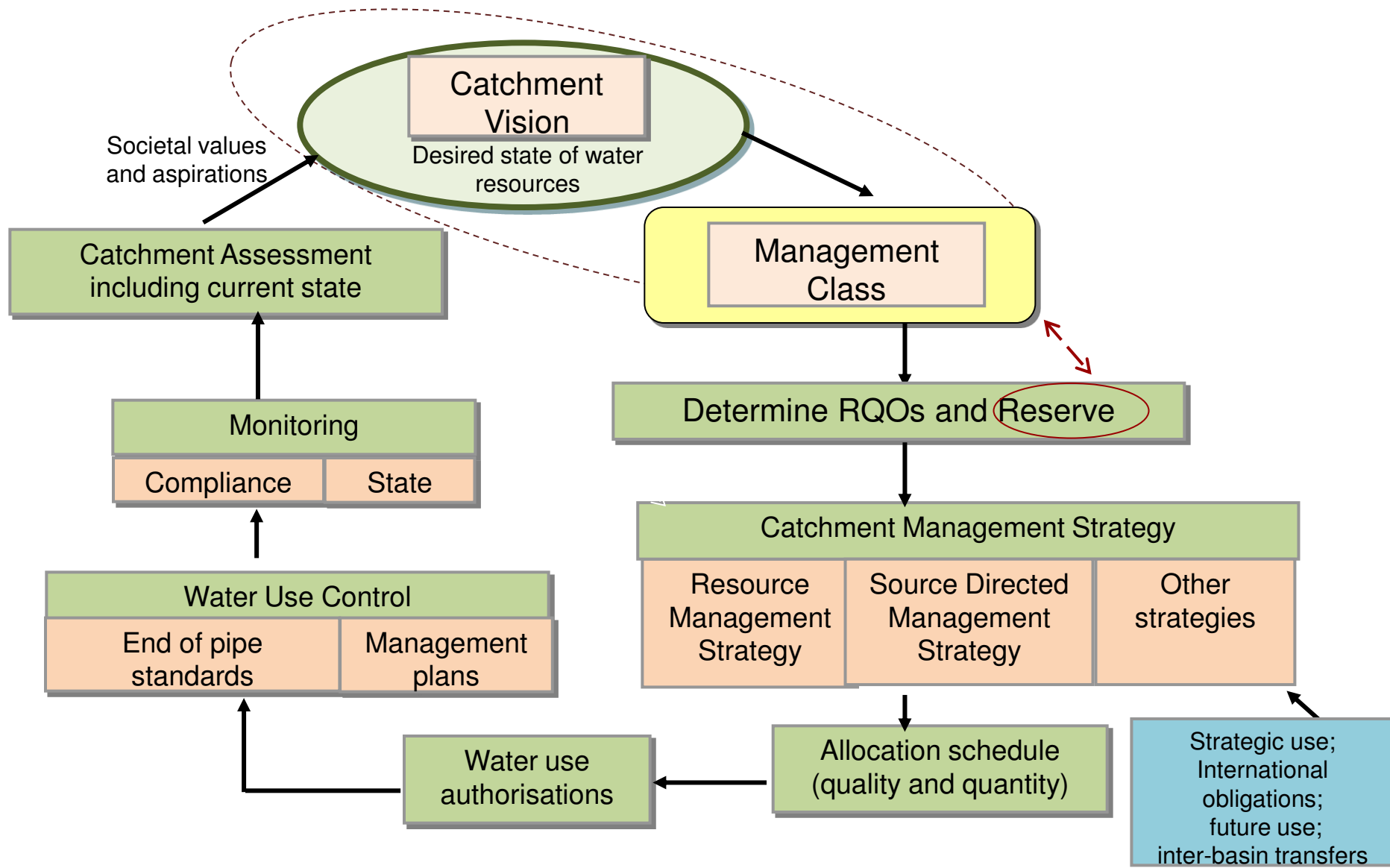
- **Ensure long term sustainable use of the water resources**
  - Quality and quantity
- **Provide regulatory certainty**
  - Facilitate decision making
- **Provide framework in which goals (resource quality objectives) can be set to measure regulatory performance and compliance**
  - Water Quality
  - Water Quantity
  - River and wetland habitat and biota

# THREE MANAGEMENT CLASSES

Classes	Description of use	Ecological Category	Description of resource
Class I	Minimally used	A-B	Minimally altered
Class II	Moderately used	C	Moderately altered
Class III	Heavily used	D	Heavily altered

Ecological Category (EC) - means the assigned ecological condition to a water resource in terms of the deviation of its biophysical components from a pre-development condition.

# INTEGRATED WATER RESOURCE MANAGEMENT



# WHY PROTECTING MVOTI TO UMZIMKULU WMA?

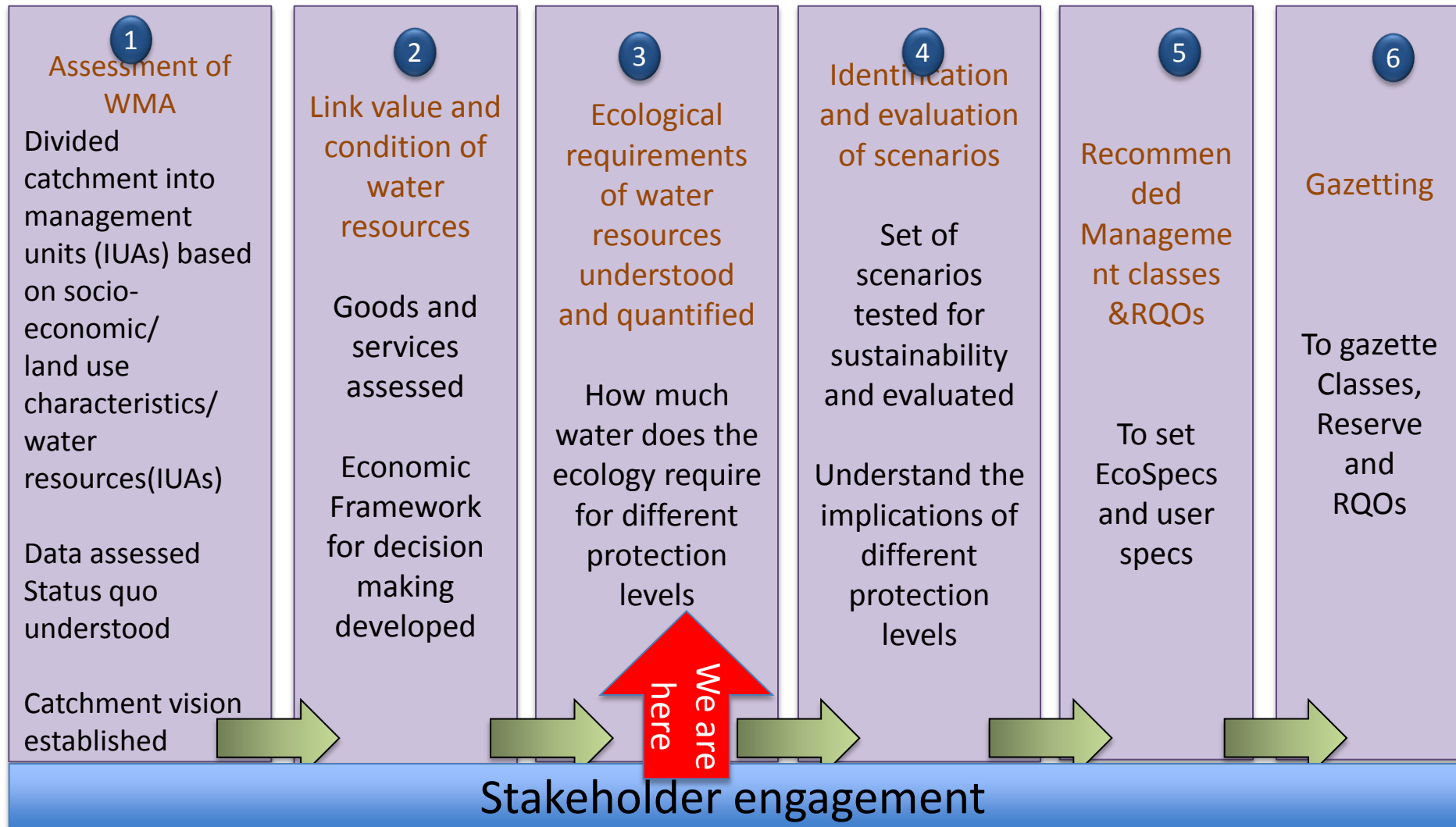
- **Some river systems are still undeveloped and unregulated – need for protection**
- **Identified water quality hotspots**
- **Agricultural and sewage runoff impacting on water quality – salts and microbiological pollution**
- **Further exacerbated by over-abstraction & unlawful water use (Surface and groundwater)**
- **Degradation of natural resources – Nature reserves or conservation along the coastline**

# CLASSIFICATION, RESERVE & RQOs DETERMINATION

- **Mvoti to Umzimkulu WMA study is a 36 months study initiated in July 2012 until June 2015**
- **Rivers for Africa was appointed to assist DWA**
- **The objective of the study was to classify ALL significant water resources into Management Classes (MC), & determine the Reserve and RQOs**

# STUDY PROCESS: WHERE ARE WE?

In accordance with the classification, Reserve and RQOs guidelines: 7 step process applies



July 2012 to November 2013



# **STAKEHOLDER ENGAGEMENT**

# STAKEHOLDER ENGAGEMENT UP TO DATE

- **Project Steering Committee established & fully functional**
- **Delineation of IUAs in place**
- **Assessment of EWRs in progress**
  
- **1<sup>st</sup> PSC meeting – 19 March 2013 (Status Quo, IUAs & Catch. Visioning)**
- **2<sup>nd</sup> PSC meeting - 26 November 2013 (Ecological Water Requirements & Socio-economic component)**
  
- **Forum meetings:**
  - **Upper Mngeni CM Forum – 25 August 2011 & 28 August 2012**
  - **Lower Mvoti Forum – 22 September 2011**

## STAKEHOLDER ENGAGEMENT UP TO DATE (2)

- **Little Amanzimtoti Pilot Studies (Ethekwini Municipality Estuaries)**
  - **Planning meeting – 19 March 2013**
  - **Ethekwini estuaries Case study workshop – 27 August 2013 (Present ecological health results of scenarios)**
  - **Reports available**  
<http://www.dwa.gov.za/Documents/Policies/WRPP/default.htm> OR  
[www.dwa.gov.za/rdm/WRCS/default.aspx](http://www.dwa.gov.za/rdm/WRCS/default.aspx)
  - **All issues and responses are being captured in a register (on-going)**

# UPCOMING STAKEHOLDER ENGAGEMENT

Sectors	Purpose	Proposed date
Upper Mngeni Forum	Ecological Water Requirements (EWRs)	28 November 2013

PSC Meetings	Focus	Dates
PSC 3	Operational scenario	June 2014
PSC 4	Scenario Consequences & Prelim. MCs	Jan 2015
PSC 5	Final MCs & RQOs	June 2015

# OVERVIEW OF THE TECHNICAL PRESENTATION

- Socio-economics assessment
  - Value of water and express the return on utilisation
- Ecological Water Requirements (EWR) and EGSA
  - River EWR
  - Estuaries EcoClassification & identification of hotspots
  - EGSA are the goods and services provided by the river (and associated ecological systems) that result in a value being produced for consumers.

# NEXT STEPS IN THE STUDY

- **Collating information arising from PSC meeting**
- **Finalisation of the EWRs**
- **Distribution of the reports for comments**
- **Moving towards ESBC and Scenarios**



**THANK YOU !!!**